



Flight Plan & Site Survey

Created using **RPAS Wilco**[®]

Operation Name:	Mission 02-13-2023
Pilot Name:	
Pilot Certificate:	
Flight Start:	February 13, 2023 6:15 PM
Flight End:	February 13, 2023 8:15 PM
Flight Area (Latitude):	47° 29' 42.00" N (47.495)
Flight Area (Longitude):	52° 46' 21.00" W (-52.773)
Altitude - Radius:	Alt: 600 ft - Rad: 740.8 m (0.4 nm)
Airspace:	UNCONTROLLED
FIR - Contact:	CZQX - 709-651-5324
Weather:	-2.9 Celsius - Snow, Ice, Overcast

Please ensure you received all required authorizations prior to flight.

Disclaimer

This Site Survey was created using RPAS Wilco by AIM Robotics. The flight plan contained is intended only for RPAS flights on the date/time and location specified. The user accepts all responsibility for the accuracy and completeness of the information contained.

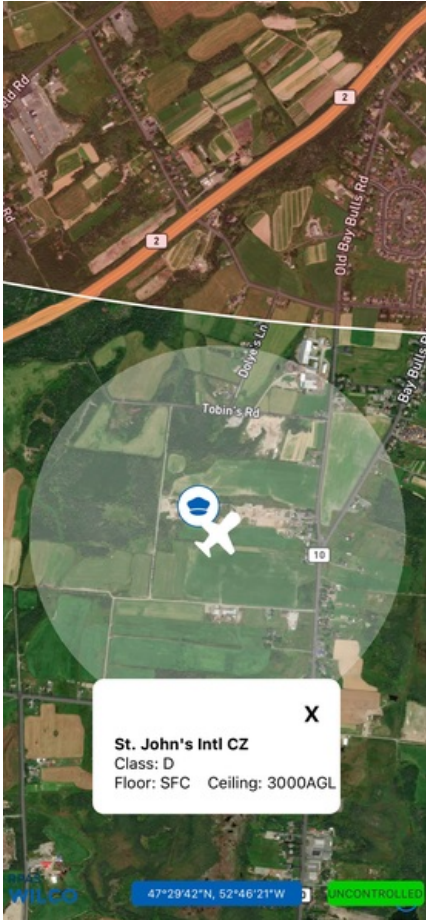
For the complete Terms & Conditions, see

<https://rpswilco.com/#/tnc>



Included

- Site Survey
- Obstacles (if available)
- Nearby Aerodromes
- Canadian Aviation Regulations
- GFA
- Aerodrome Supplements
 - METAR & TAF (if available)
 - NOTAMs
 - CFS

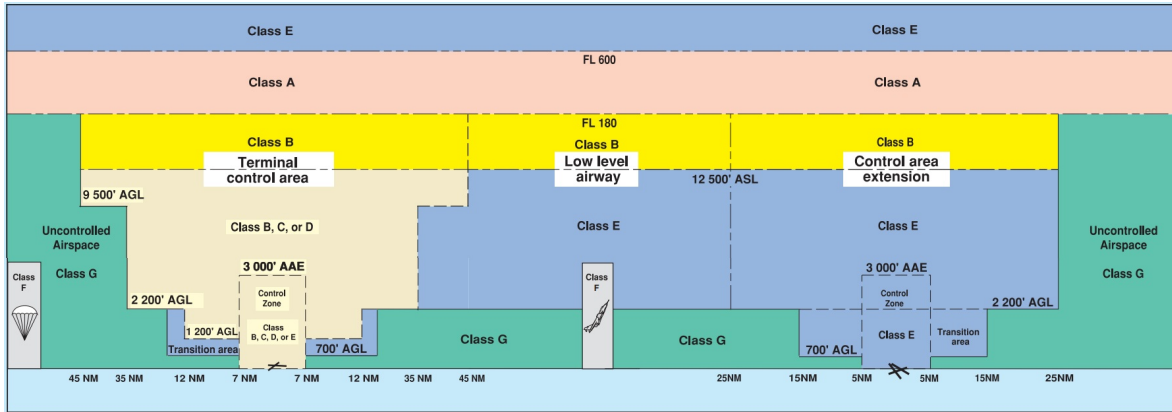
Flight Map



MAP Details

	Latitude	Longitude
 MODEL	47° 29' 42.00" N (47.495)	52° 46' 21.00" W (-52.773)
 Pilot Randall Hepner	47° 29' 45.60" N (47.496)	52° 46' 24.60" W (-52.7735)

Airspace Classification



Overlying Airspaces

Class	Name	Floor	Ceiling
E	St. John's Intl, NL TA	700AGL	12500MSL
B	St. John's Intl, NL TA	12500MSL	18000MSL
E	St. John's Intl XPNDR MANDTRY	3000MSL	12500MSL
E	St. John's Intl XPNDR MANDTRY	2000MSL	3000MSL
E	Gander FIR CAE	5500MSL	12500MSL
B	Gander FIR CAE	12500MSL	18000MSL
E	Gander FIR CAE	2200AGL	12500MSL
B	Gander FIR CAE	12500MSL	18000MSL

Nearest Aerodromes & Distance from Operation

ST. JOHNS (PADDYS POND) (CCQ5 - WATERDROME - Reg)	Lat: 47.467	Long: -52.9	10.075 KM	5.44 NM
ST. JOHN'S (HEALTH SCIENCES CENTRE) (CCK2 - HELIPORT - Cert)	Lat: 47.573	Long: -52.745	8.916 KM	4.81 NM
ST. JOHN'S INTL (CYYT - AERODROME - Cert)	Lat: 47.619	Long: -52.752	13.874 KM	7.49 NM
ST. JOHN'S (QUINLAN HELIFLIGHT SERVICES) (CDC2 - HELIPORT - Cert)	Lat: 47.608	Long: -52.727	13.021 KM	7.03 NM

Weather Information for Mission Day

Summary: Cloudy skies throughout the day with a chance of snow throughout the day.

Condition	Temperature	Feels Like	Precipitation	Visibility	Cloud Coverage	Wind Speed	Humidity
Snow, Ice, Overcast	-2.9 Celsius	-10.8 Celsius	100.0 %	0.3 Km	100.0 %	42.1 kph	95.2 %

Canadian Aviation Regulations

Division III — General Operating and Flight Rules

For full listing please visit : <https://laws-lois.justice.gc.ca/eng/regulations/SOR-96-433/FullText.html#s-901.27>

Visual Line-of-sight

- **901.11 (1)** Subject to subsection (2), no pilot shall operate a remotely piloted aircraft system unless the pilot or a visual observer has the aircraft in visual line-of-sight at all times during flight.
- **(2)** A pilot may operate a remotely piloted aircraft system without the pilot or a visual observer having the aircraft in visual line-of-sight if the operation is conducted in accordance with a special flight operations certificate — RPAS issued under section 903.03.

Procedures

- **901.23 (1)** No pilot shall operate a remotely piloted aircraft system unless the following procedures are established:
 - **(a)** normal operating procedures, including pre-flight, take-off, launch, approach, landing and recovery procedures; and
 - **(b)** emergency procedures, including with respect to
 - **(i)** a control station failure,
 - **(ii)** an equipment failure,
 - **(iii)** a failure of the remotely piloted aircraft,
 - **(iv)** a loss of the command and control link,
 - **(v)** a fly-away, and
 - **(vi)** flight termination.
- **(2)** If the manufacturer of the remotely piloted aircraft system provides instructions with respect to the topics referred to in paragraphs (1)(a) and (b), the procedures established under subsection (1) shall reflect those instructions.
- **(3)** No pilot shall conduct the take-off or launch of a remotely piloted aircraft unless the procedures referred to in subsection (1) are reviewed before the flight by, and are immediately available to, each crew member.
- **(4)** No pilot shall operate a remotely piloted aircraft system unless the operation is conducted in accordance with the procedures referred to in subsection (1).

Site Survey

901.27 No pilot shall operate a remotely piloted aircraft system unless, before commencing operations, they determine that the site for take-off, launch, landing or recovery is suitable for the proposed operation by conducting a site survey that takes into account the following factors:

- **(a)** the boundaries of the area of operation;
- **(b)** the type of airspace and the applicable regulatory requirements;
- **(c)** the altitudes and routes to be used on the approach to and departure from the area of operation;
- **(d)** the proximity of manned aircraft operations;
- **(e)** the proximity of aerodromes, airports and heliports;
- **(f)** the location and height of obstacles, including wires, masts, buildings, cell phone towers and wind turbines;
- **(g)** the predominant weather and environmental conditions for the area of operation; and
- **(h)** the horizontal distances from persons not involved in the operation.

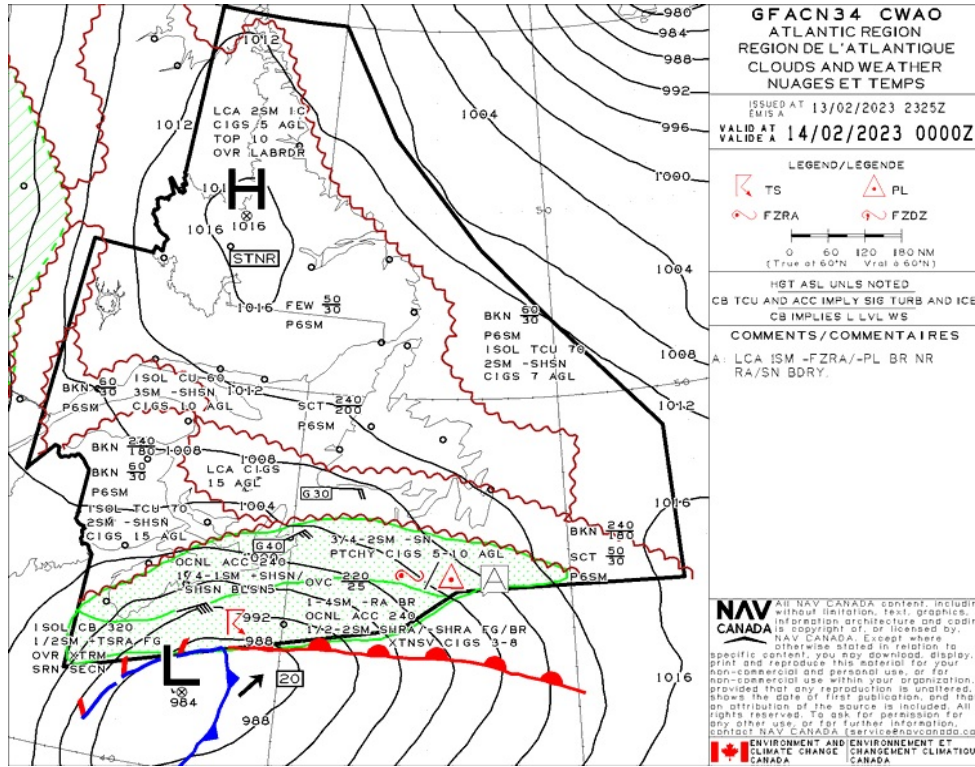
Operations at or in the Vicinity of an Aerodrome, Airport or Heliport

- **901.47 (1)** No pilot shall operate a remotely piloted aircraft at or near an aerodrome that is listed in the *Canada Flight Supplement* or the *Water Aerodrome Supplement* in a manner that could interfere with an aircraft operating in the established traffic pattern.
- **(2)** Subject to section 901.73, no pilot shall operate a remotely piloted aircraft at a distance of less than
 - **(a)** three nautical miles from the centre of an airport; and
 - **(b)** one nautical mile from the centre of a heliport.
- **(3)** No pilot shall operate a remotely piloted aircraft at a distance of less than three nautical miles from the centre of an aerodrome operated under the authority of the Minister of National Defence unless the operation is conducted in accordance with a special flight operations certificate — RPAS issued under section 903.03.

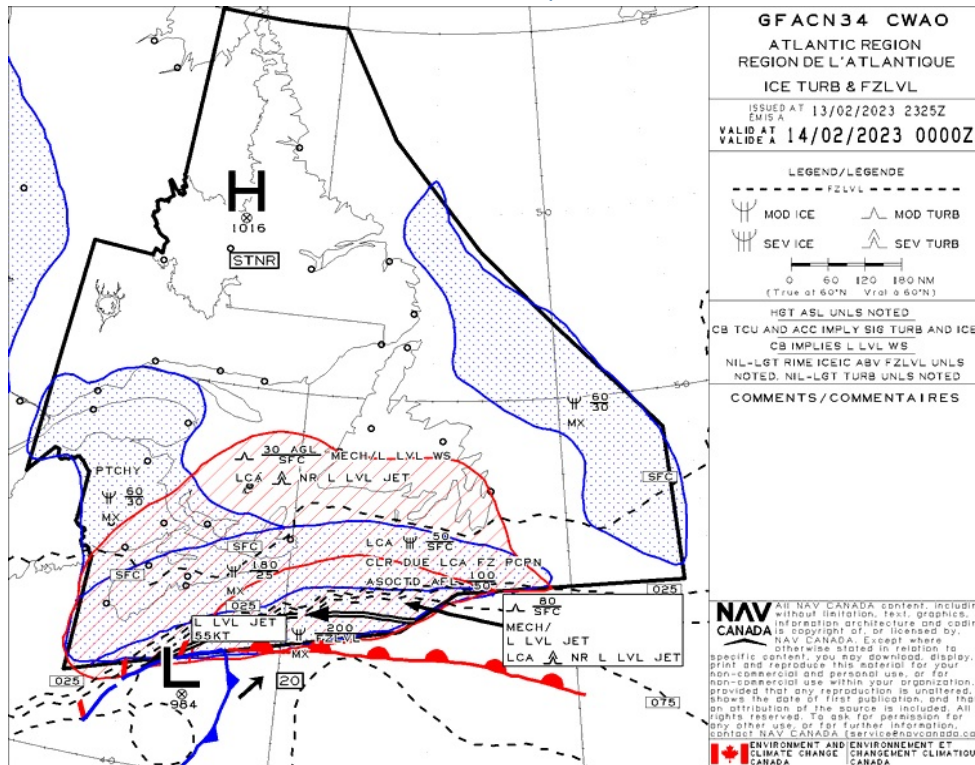
Records

- **901.48 (1)** Every owner of a remotely piloted aircraft system shall keep the following records:
 - **(a)** a record containing the names of the pilots and other crew members who are involved in each flight and, in respect of the system, the time of each flight or series of flights; and
 - **(b)** a record containing the particulars of any mandatory action and any other maintenance action, modification or repair performed on the system, including
 - **(i)** the names of the persons who performed them,
 - **(ii)** the dates they were undertaken,
 - **(iii)** in the case of a modification, the manufacturer, model and a description of the part or equipment installed to modify the system, and
 - **(iv)** if applicable, any instructions provided to complete the work.
- **(2)** Every owner of a remotely piloted aircraft system shall ensure that the records referred to in subsection (1) are made available to the Minister on request and are retained for a period of
 - **(a)** in the case of the records referred to in paragraph (1)(a), 12 months after the day on which they are created; and
 - **(b)** in the case of the records referred to in paragraph (1)(b), 24 months after the day on which they are created.
- **(3)** Every owner of a remotely piloted aircraft system who transfers ownership of the system to another person shall, at the time of transfer, also deliver to that person all of the records referred to in paragraph (1)(b).

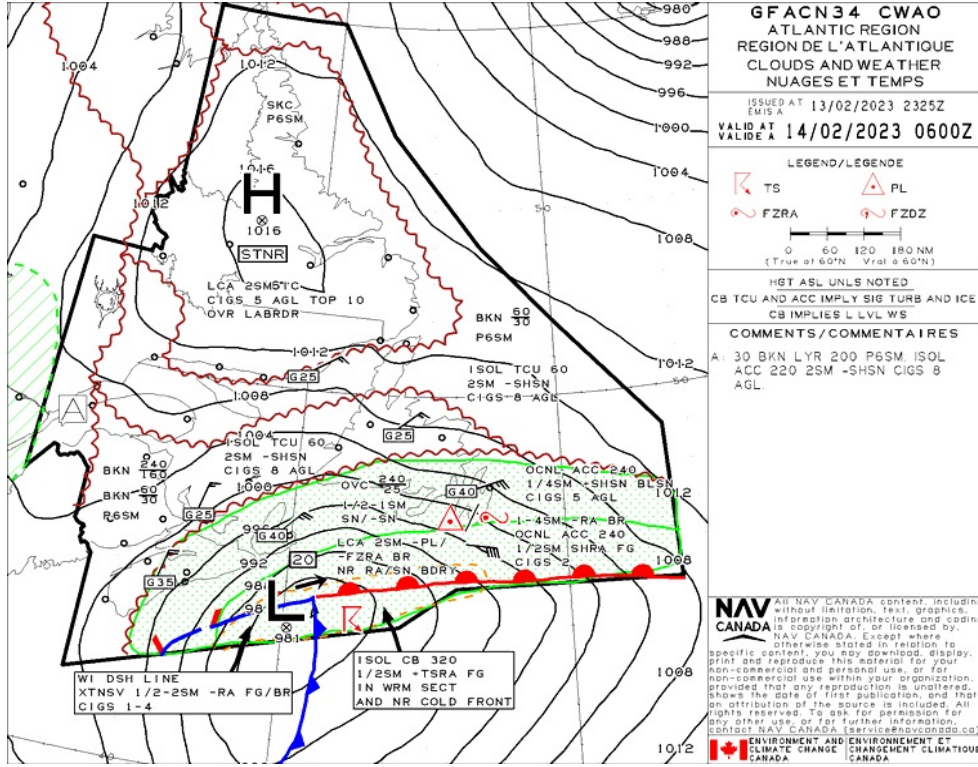
GFA Issue time + 00 hr - CLOUDS AND WEATHER



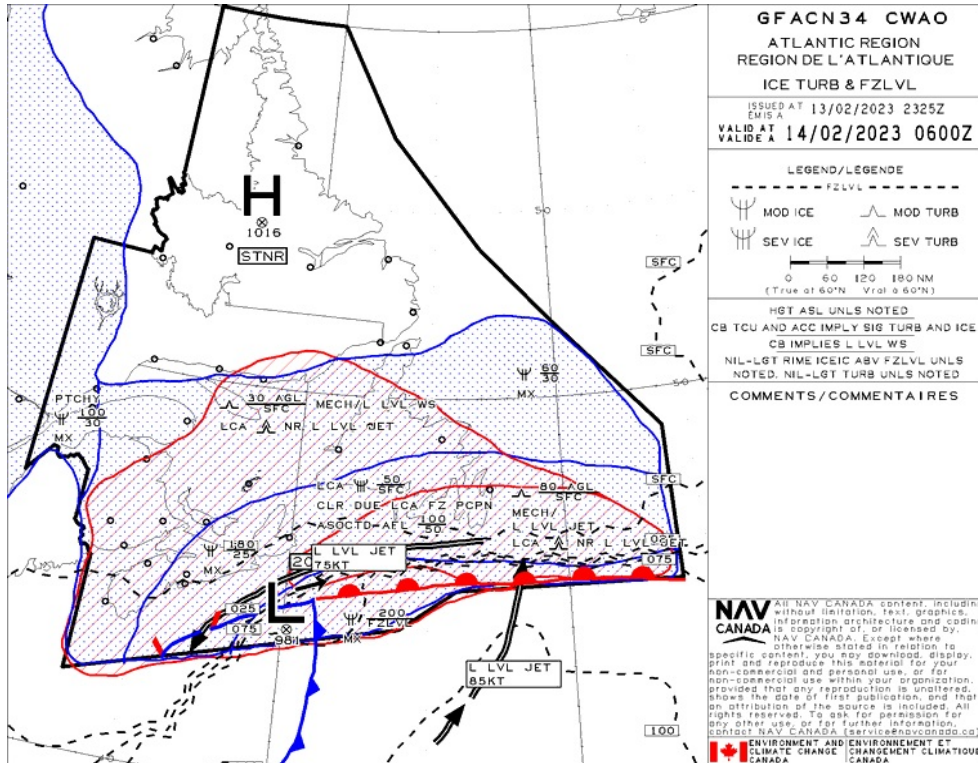
GFA Issue time + 00 hr - TURBULENCE, ICING AND FREEZING LEVEL



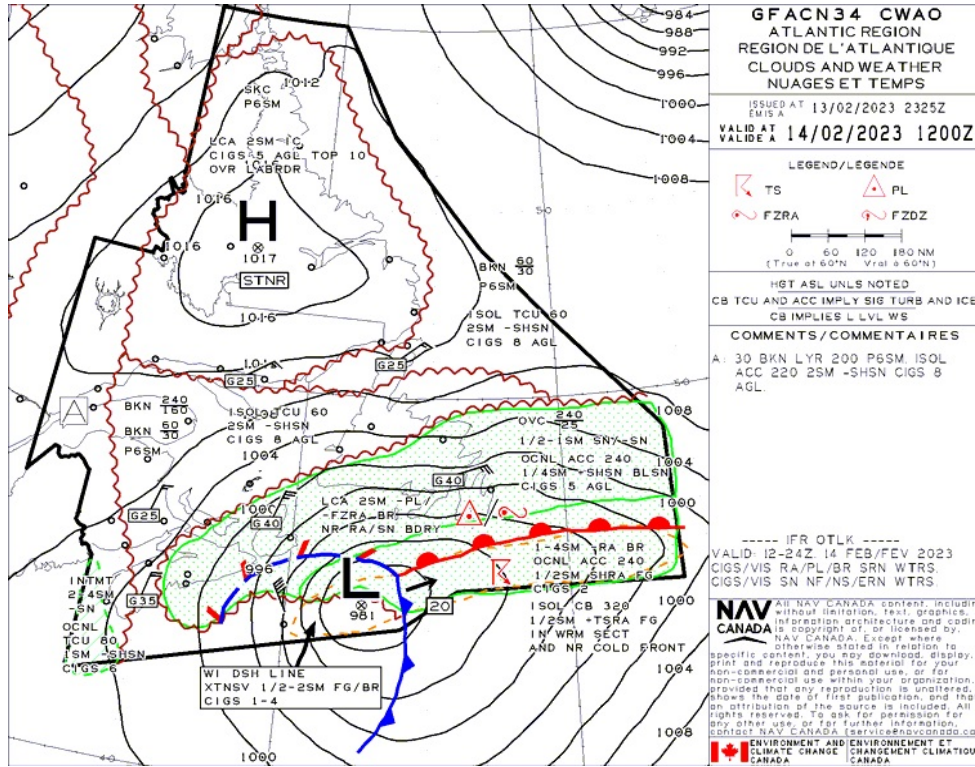
GFA Issue time + 06 hr - CLOUDS AND WEATHER



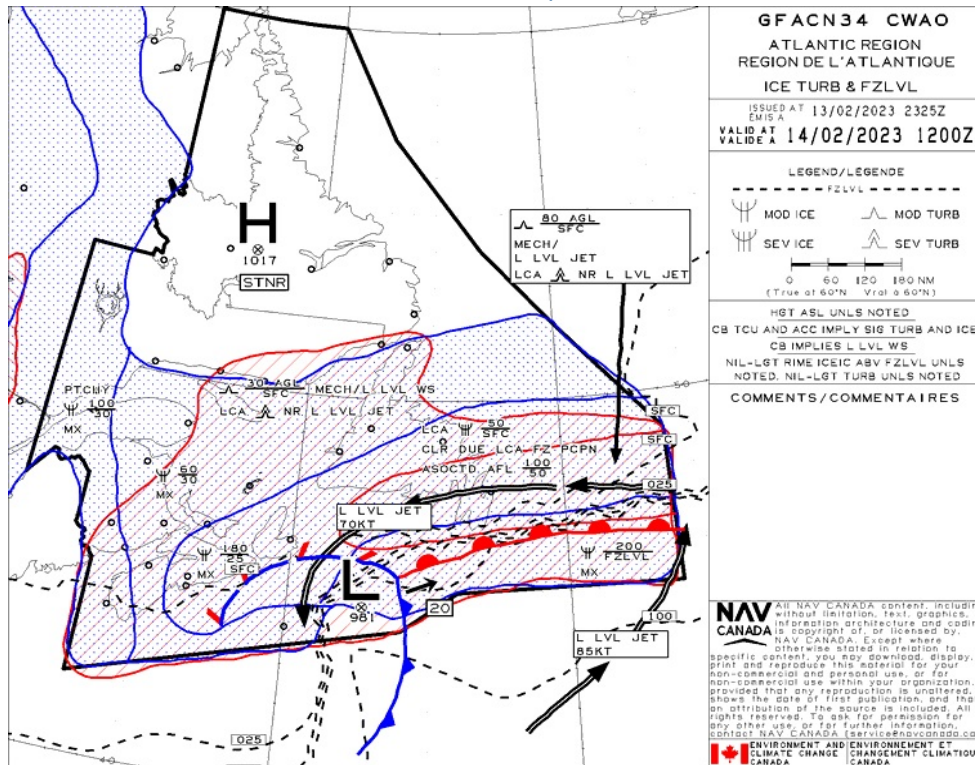
GFA Issue time + 06 hr - TURBULENCE, ICING AND FREEZING LEVEL



GFA Issue time + 12 hr - CLOUDS AND WEATHER



GFA Issue time + 12 hr - TURBULENCE, ICING AND FREEZING LEVEL





ST. JOHNS (PADDYS POND) - CCQ5 - Reg

NOTAM

(H0055/23 NOTAMR H3562/22

Q) CZXX/QOEC/IV/NBO/E/000/999/5440N06941W999

A) CZUL CZQM CZQX B) 2301111839 C) 2304121800EST

E) ALL ACFT, REGARDLESS OF THE STATE OF REGISTRY, DIRECTLY OR INDIRECTLY OWNED, CHARTERED, LEASED, OPERATED OR OTHERWISE CONTROLLED BY A PERSON CONNECTED WITH EITHER THE RUSSIAN FEDERATION OR OF BELARUS OR BY A CORPORATION OR ENTITY THAT IS INCORPORATED OR FORMED UNDER THE LAWS OF THE RUSSIAN FEDERATION OR BELARUS, AND ALL OPERATORS HOLDING AN AIR OPERATOR CERTIFICATE (AOC) ISSUED BY RUSSIAN FEDERATION AND/OR BELARUSIAN AUTHORITIES ARE PROHIBITED TO ENTER, EXIT OR OVERFLY CANADA'S TERRITORIAL AIRSPACE (INCLUDING FLT WITHIN 12NM OF CANADA'S COASTS). EXCEPTIONS PERMITTED FOR ACFT EXPERIENCING INFLIGHT EMERG.

ALL AUTH OBTAINED PRIOR TO 27 FEB 2022 FOR ACFT AND OPS SUBJECT TO THIS NOTAM ARE REVOKED.

HUMANITARIAN, SAR, MEDEVAC AND ANY OTHER FLT SEEKING AN EXCEPTION TO THIS RESTRICTION MUST RECEIVE AUTH GRANTED AFTER 27 FEB 2022 FM THE MINISTER OF TRANSPORT TO OPERATE IN CANADA'S TERRITORIAL AIRSPACE. AFFECTED ACFT WISHING TO OBTAIN SUCH AN AUTH OR CLR INTO CANADA'S TERRITORIAL AIRSPACE MAY APPLY TO THE MINISTER OF TRANSPORT AT 1-877-992-6853 OR 1-613-992-6853 OR BY EMAIL AT OPERATIONS.AVIATION(AT)TC.GC.CA.

FR:

TOUS AERONEFS, INDEPENDAMMENT DE L'ETAT D'IMMATRICULATION, DIRECTEMENT OU INDIRECTEMENT POSSEDES, AFFRETES, LOUES, EXPLOITES OU CONTROLES PAR UNE PERSONNE LIEE AVEC LA FEDERATION RUSSE OU DU BELARUS OU PAR UNE SOCIETE OU UNE ENTITE INCORPOREE OU FORMEE EN VERTU DES LOIS DE LA FEDERATION RUSSE OU DU BELARUS, ET TOUS LES EXPLOITANTS DETENANT UN CERTIFICAT D'EXPLOITANT AERIEN (CEA) EMIS PAR LA FEDERATION RUSSE ET/OU LES AUTORITES DU BELARUS SONT INTERDITS D'ENTRER, DE SORTIR OU DE SURVOLER L'ESPACE AERIEN TERRITORIAL DU CANADA (Y COMPRIS LE VOL A MOINS DE 12 MILES NAUTIQUES DES COTES CANADIENNES). EXCEPTIONS PERMISES POUR LES AERONEFS SUBISSANT DES URGENCES EN VOL.

TOUTES LES AUTORISATIONS OBTENUES AVANT LE 27 FEB 2022 POUR LES AERONEFS ET LES OPERATIONS SOUMIS A CE NOTAM SONT REVOQUEES.

LES VOLS HUMANITAIRES, SAR, MEDEVAC ET TOUT AUTRE VOL RECHERCHANT UNE EXCEPTION A CETTE RESTRICTION DOIVENT RECEVOIR UNE AUTORISATION ACCORDEE APRES LE 27 FEB 2022 PAR LE MINISTRE DES TRANSPORTS POUR OPERER DANS L'ESPACE AERIEN TERRITORIAL DU CANADA. LES AERONEFS AFFECTES SOUHAITANT OBTENIR UNE TELLE AUTORISATION OU AUTORISATION D'ENTRER DANS L'ESPACE AERIEN TERRITORIAL CANADIEN PEUVENT FAIRE UNE DEMANDE AU MINISTRE DES TRANSPORTS AU 1-877-992-6853 OU 1-613-992-6853 OU PAR COURRIEL A OPERATIONS.AVIATION(AT)TC.GC.CA)

(N4660/22 NOTAMN

Q) CZQX/QAACH/IV/B0/E/000/999/4811N05340W100

A) CZQX B) 2212292000 C) 2303281900EST

E) V315 BTN YQX VOR AND YYT VOR MEA TO READ 5500 INSTEAD OF 3700)

ST. JOHN'S (HEALTH SCIENCES CENTRE) - CCK2 - Cert

NOTAM

(H0055/23 NOTAMR H3562/22

Q) CZXX/QOEC/IV/NBO/E/000/999/5440N06941W999
 A) CZUL CZQM CZQX B) 2301111839 C) 2304121800EST
 E) ALL ACFT, REGARDLESS OF THE STATE OF REGISTRY, DIRECTLY OR INDIRECTLY OWNED, CHARTERED, LEASED, OPERATED OR OTHERWISE CONTROLLED BY A PERSON CONNECTED WITH EITHER THE RUSSIAN FEDERATION OR OF BELARUS OR BY A CORPORATION OR ENTITY THAT IS INCORPORATED OR FORMED UNDER THE LAWS OF THE RUSSIAN FEDERATION OR BELARUS, AND ALL OPERATORS HOLDING AN AIR OPERATOR CERTIFICATE (AOC) ISSUED BY RUSSIAN FEDERATION AND/OR BELARUSIAN AUTHORITIES ARE PROHIBITED TO ENTER, EXIT OR OVERFLY CANADA'S TERRITORIAL AIRSPACE (INCLUDING FLT WITHIN 12NM OF CANADA'S COASTS). EXCEPTIONS PERMITTED FOR ACFT EXPERIENCING INFLIGHT EMERG.

ALL AUTH OBTAINED PRIOR TO 27 FEB 2022 FOR ACFT AND OPS SUBJECT TO THIS NOTAM ARE REVOKED.

HUMANITARIAN, SAR, MEDEVAC AND ANY OTHER FLT SEEKING AN EXCEPTION TO THIS RESTRICTION MUST RECEIVE AUTH GRANTED AFTER 27 FEB 2022 FM THE MINISTER OF TRANSPORT TO OPERATE IN CANADA'S TERRITORIAL AIRSPACE. AFFECTED ACFT WISHING TO OBTAIN SUCH AN AUTH OR CLR INTO CANADA'S TERRITORIAL AIRSPACE MAY APPLY TO THE MINISTER OF TRANSPORT AT 1-877-992-6853 OR 1-613-992-6853 OR BY EMAIL AT OPERATIONS.AVIATION(AT)TC.GC.CA.

FR:

TOUS AERONEFS, INDEPENDAMMENT DE L'ETAT D'IMMATRICULATION, DIRECTEMENT OU INDIRECTEMENT POSSEDES, AFFRETES, LOUES, EXPLOITES OU CONTROLES PAR UNE PERSONNE LIEE AVEC LA FEDERATION RUSSE OU DU BELARUS OU PAR UNE SOCIETE OU UNE ENTITE INCORPOREE OU FORMEE EN VERTU DES LOIS DE LA FEDERATION RUSSE OU DU BELARUS, ET TOUS LES EXPLOITANTS DETENANT UN CERTIFICAT D'EXPLOITANT AERIEN (CEA) EMIS PAR LA FEDERATION RUSSE ET/OU LES AUTORITES DU BELARUS SONT INTERDITS D'ENTRER, DE SORTIR OU DE SURVOLER L'ESPACE AERIEN TERRITORIAL DU CANADA (Y COMPRIS LE VOL A MOINS DE 12 MILES NAUTIQUES DES COTES CANADIENNES). EXCEPTIONS PERMISES POUR LES AERONEFS SUBISSANT DES URGENCES EN VOL.

TOUTES LES AUTORISATIONS OBTENUES AVANT LE 27 FEB 2022 POUR LES AERONEFS ET LES OPERATIONS SOUMIS A CE NOTAM SONT REVOQUEES.

LES VOLS HUMANITAIRES, SAR, MEDEVAC ET TOUT AUTRE VOL RECHERCHANT UNE EXCEPTION A CETTE RESTRICTION DOIVENT RECEVOIR UNE AUTORISATION ACCORDEE APRES LE 27 FEB 2022 PAR LE MINISTRE DES TRANSPORTS POUR OPERER DANS L'ESPACE AERIEN TERRITORIAL DU CANADA. LES AERONEFS AFFECTES SOUHAITANT OBTENIR UNE TELLE AUTORISATION OU AUTORISATION D'ENTRER DANS L'ESPACE AERIEN TERRITORIAL CANADIEN PEUVENT FAIRE UNE DEMANDE AU MINISTRE DES TRANSPORTS AU 1-877-992-6853 OU 1-613-992-6853 OU PAR COURRIEL A OPERATIONS.AVIATION(AT)TC.GC.CA)

(E0314/23 NOTAMR E0263/23

Q) CZQX/QFAXX/IV/NBO/A/000/999/4737N05245W005
 A) CYYT B) 2301192322 C) 2302172100
 E) LOW VIS PROC LTD TO 1 ACFT ON THE MANOEUVRING AREA OR CLR TO LAND AT A TIME DUE TO SFC GUIDANCE U/S.)

(E5826/22 NOTAMN

Q) CZQX/QFFCH/IV/NBO/A/000/999/4737N05245W005
 A) CYYT B) 2211031516 C) PERM
 E) AMEND PUBLICATIONS: SERVICES:
 ACFT RESCUE AND FIRE FIGHTING (ARFF) TO READ: DESIGNATED CAT 7)

(E0859/23 NOTAMR E0797/23

Q) CZQX/QMXLC/IV/M/A/000/999/4737N05245W005
 A) CYYT B) 2302131309 C) 2305122330EST
 E) TWY M BTN TWY B AND TWY D CLSD.)

(E0401/23 NOTAMR E5698/22

Q) CZQX/QPICH/I/NBO/A/000/999/4737N05245W005
 A) CYYT B) 2301231619 C) 2304211900EST
 E) DUE TO NON-PRECISION LVL OF SVC RWY 16

RNAV (GNSS) X RWY 16 APCH:
 LPV CAT A MINIMA TO READ: 694 (251) 1 RVR 50

RNAV (GNSS) Z RWY 16 APCH:
 LPV MINIMA TO READ: 694 (251) 1 RVR 50

ILS RWY 16 APCH:
 ILS/DME MINIMA TO READ: 703 (250) 1 RVR 50)

(E5753/22 NOTAMN

Q) CZQX/QFIXX/IV/NBO/A/000/999/4737N05245W005
 A) CYYT B) 2210311411 C) PERM
 E) AMEND PUBLICATIONS:
 PRO: DE-ICING PROCEDURES: NOTES: ADD:
 CTC 709-753-9742 FOR DE-ICING IF ICEHOUSE UNAVBL)

(E0589/23 NOTAMR E5820/22

Q) CZQX/QFAXX/IV/NBO/A/000/999/4737N05245W005
 A) CYYT B) 2302020051 C) 2305011930EST

E) STOP BAR RWY 11, RWY 29, TWY C, TWY D, TWY G, TWY J AND TWY M U/S)

(N4660/22 NOTAMN

Q) CZQX/QAACH/IV/B0/E/000/999/4811N05340W100

A) CZQX B) 2212292000 C) 2303281900EST

E) V315 BTN YQX VOR AND YYT VOR MEA TO READ 5500 INSTEAD OF 3700)



Flight Plan & Site Survey

ST. JOHN'S INTL - CYYT - Cert

METAR

METAR CYYT 140000Z 07012G18KT 15SM BKN180 M04/M07 A2985 RMK AC6 SLP120=

METAR	LOCATION CYYT - ST. JOHN'S INTL/NL	DATE - TIME 14 FEBRUARY 2023 - 0000 UTC
WIND 70 TRUE @ 12 KNOTS GUSTS 18 KNOTS	VISIBILITY 15 STAT. MILES	RUNWAY VISUAL RANGE
WEATHER	CLOUDINESS BROKEN CLOUDS (5/8 - 7/8) 18000 FT	TEMP / DEWPOINT -4 C / -7 C
ALTIMETER 29.85 IN HG	RECENT WEATHER	WIND SHEAR

METAR CYYT 132300Z 05006KT 15SM BKN210 M05/M08 A2987 RMK CI7 SLP124=

METAR	LOCATION CYYT - ST. JOHN'S INTL/NL	DATE - TIME 13 FEBRUARY 2023 - 2300 UTC
WIND 50 TRUE @ 6 KNOTS	VISIBILITY 15 STAT. MILES	RUNWAY VISUAL RANGE
WEATHER	CLOUDINESS BROKEN CLOUDS (5/8 - 7/8) 21000 FT	TEMP / DEWPOINT -5 C / -8 C
ALTIMETER 29.87 IN HG	RECENT WEATHER	WIND SHEAR

METAR CYYT 132200Z 07002KT 15SM FEW035 OVC220 M03/M09 A2988 RMK SC1CI7 SLP129=

METAR	LOCATION CYYT - ST. JOHN'S INTL/NL	DATE - TIME 13 FEBRUARY 2023 - 2200 UTC
WIND 70 TRUE @ 2 KNOTS	VISIBILITY 15 STAT. MILES	RUNWAY VISUAL RANGE
WEATHER	CLOUDINESS FEW CLOUDS (1/8 - 2/8) 3500 FT OVERCAST 22000 FT	TEMP / DEWPOINT -3 C / -9 C
ALTIMETER 29.88 IN HG	RECENT WEATHER	WIND SHEAR

NOTAM

(H0055/23 NOTAMR H3562/22

Q) CZXX/QOEC/IV/NBO/E/000/999/5440N06941W999
A) CZUL CZQM CZQX B) 2301111839 C) 2304121800EST
E) ALL ACFT, REGARDLESS OF THE STATE OF REGISTRY, DIRECTLY OR INDIRECTLY OWNED, CHARTERED, LEASED, OPERATED OR OTHERWISE CONTROLLED BY A PERSON CONNECTED WITH EITHER THE RUSSIAN FEDERATION OR OF BELARUS OR BY A CORPORATION OR ENTITY THAT IS INCORPORATED OR FORMED UNDER THE LAWS OF THE RUSSIAN FEDERATION OR BELARUS, AND ALL OPERATORS HOLDING AN AIR OPERATOR CERTIFICATE (AOC) ISSUED BY RUSSIAN FEDERATION AND/OR BELARUSIAN AUTHORITIES ARE PROHIBITED TO ENTER, EXIT OR OVERFLY CANADA'S TERRITORIAL AIRSPACE (INCLUDING FLT WITHIN 12NM OF CANADA'S COASTS). EXCEPTIONS PERMITTED FOR ACFT EXPERIENCING INFLIGHT EMERG.

ALL AUTH OBTAINED PRIOR TO 27 FEB 2022 FOR ACFT AND OPS SUBJECT TO THIS NOTAM ARE REVOKED.

HUMANITARIAN, SAR, MEDEVAC AND ANY OTHER FLT SEEKING AN EXCEPTION TO THIS RESTRICTION MUST RECEIVE AUTH GRANTED AFTER 27 FEB 2022 FM THE MINISTER OF TRANSPORT TO OPERATE IN CANADA'S TERRITORIAL AIRSPACE. AFFECTED ACFT WISHING TO OBTAIN SUCH AN AUTH OR CLR INTO CANADA'S TERRITORIAL AIRSPACE MAY APPLY TO THE MINISTER OF TRANSPORT AT 1-877-992-6853 OR 1-613-992-6853 OR BY EMAIL AT OPERATIONS.AVIATION(AT)TC.GC.CA.

FR:

TOUS AERONEFS, INDEPENDAMMENT DE L'ETAT D'IMMATRICULATION, DIRECTEMENT OU INDIRECTEMENT POSSEDES, AFFRETES, LOUES, EXPLOITES OU CONTROLES PAR UNE PERSONNE LIEE AVEC LA FEDERATION RUSSE OU DU BELARUS OU PAR UNE SOCIETE OU UNE ENTITE INCORPOREE OU FORMEE EN VERTU DES LOIS DE LA FEDERATION RUSSE OU DU BELARUS, ET TOUS LES EXPLOITANTS DETENANT UN CERTIFICAT D'EXPLOITANT AERIEN (CEA) EMIS PAR LA FEDERATION RUSSE ET/OU LES AUTORITES DU BELARUS SONT INTERDITS D'ENTRER, DE SORTIR OU DE SURVOLER L'ESPACE AERIEN TERRITORIAL DU CANADA (Y COMPRIS LE VOL A MOINS DE 12 MILES NAUTIQUES DES COTES CANADIENNES). EXCEPTIONS PERMISES POUR LES AERONEFS SUBISSANT DES URGENCES EN VOL.

TOUTES LES AUTORISATIONS OBTENUES AVANT LE 27 FEB 2022 POUR LES AERONEFS ET LES OPERATIONS SOUMIS A CE NOTAM SONT REVOQUEES.

LES VOLS HUMANITAIRES, SAR, MEDEVAC ET TOUT AUTRE VOL RECHERCHANT UNE EXCEPTION A CETTE RESTRICTION DOIVENT RECEVOIR UNE AUTORISATION ACCORDEE APRES LE 27 FEB 2022 PAR LE MINISTRE DES TRANSPORTS POUR OPERER DANS L'ESPACE AERIEN TERRITORIAL DU CANADA. LES AERONEFS AFFECTES SOUHAITANT OBTENIR UNE TELLE AUTORISATION OU AUTORISATION D'ENTRER DANS L'ESPACE AERIEN TERRITORIAL CANADIEN PEUVENT FAIRE UNE DEMANDE AU MINISTRE DES TRANSPORTS AU 1-877-992-6853 OU 1-613-992-6853 OU PAR COURRIEL A OPERATIONS.AVIATION(AT)TC.GC.CA)

(E0314/23 NOTAMR E0263/23

Q) CZQX/QFAXX/IV/NBO/A/000/999/4737N05245W005
A) CYYT B) 2301192322 C) 2302172100
E) LOW VIS PROC LTD TO 1 ACFT ON THE MANOEUVRING AREA OR CLR TO LAND AT A TIME DUE TO SFC GUIDANCE U/S.)

(E5826/22 NOTAMR

Q) CZQX/QFFCH/IV/NBO/A/000/999/4737N05245W005
A) CYYT B) 2211031516 C) PERM
E) AMEND PUBLICATIONS: SERVICES:
ACFT RESCUE AND FIRE FIGHTING (ARFF) TO READ: DESIGNATED CAT 7)

(S9196/23 NOTAMR S9181/23

Q) CZQX/QFAXX/IV/NBO/A/000/999/4737N05245W005
A) CYYT B) 2302132214 C) 2302140614
E) RSC 11 6/6/6 DRY, DRY, DRY. 180FT WIDTH. REMAINING WIDTH ICE. VALID FEB 13 2204 - FEB 14 0604.

RSC 29 6/6/6 DRY, DRY, DRY. 180FT WIDTH. REMAINING WIDTH ICE. VALID FEB 13 2204 - FEB 14 0604.

RSC 16 6/6/6 DRY, DRY, 10 PCT ICE. 180FT WIDTH. REMAINING WIDTH ICE. VALID FEB 13 2159 - FEB 14 0559.

RSC 34 6/6/6 10 PCT ICE, DRY, DRY. 180FT WIDTH. REMAINING WIDTH ICE. VALID FEB 13 2159 - FEB 14 0559.

ADDN NON-GRF/TALPA INFO:)

(E0859/23 NOTAMR E0797/23

Q) CZQX/QMXLC/IV/M/A/000/999/4737N05245W005
A) CYYT B) 2302131309 C) 2305122330EST
E) TWY M BTN TWY B AND TWY D CLSD.)

(E0401/23 NOTAMR E5698/22

Q) CZQX/QPICH/I/NBO/A/000/999/4737N05245W005
A) CYYT B) 2301231619 C) 2304211900EST
E) DUE TO NON-PRECISION LVL OF SVC RWY 16

RNAV (GNSS) X RWY 16 APCH:
LPV CAT A MINIMA TO READ: 694 (251) 1 RVR 50

RNAV (GNSS) Z RWY 16 APCH:
LPV MINIMA TO READ: 694 (251) 1 RVR 50

ILS RWY 16 APCH:
ILS/DME MINIMA TO READ: 703 (250) 1 RVR 50)

(E5753/22 NOTAMR

Q) CZQX/QFXX/IV/NBO/A/000/999/4737N05245W005
A) CYYT B) 2210311411 C) PERM
E) AMEND PUBLICATIONS:
PRO: DE-ICING PROCEDURES: NOTES: ADD:
CTC 709-753-9742 FOR DE-ICING IF ICEHOUSE UNAVBL)

(E0589/23 NOTAMR E5820/22

Q) CZQX/QFAXX/IV/NBO/A/000/999/4737N05245W005
A) CYYT B) 2302020051 C) 2305011930EST

E) STOP BAR RWY 11, RWY 29, TWY C, TWY D, TWY G, TWY J AND TWY M U/S)

(N4660/22 NOTAMN

Q) CZQX/QAACH/IV/B0/E/000/999/4811N05340W100

A) CZQX B) 2212292000 C) 2303281900EST

E) V315 BTN YQX VOR AND YYT VOR MEA TO READ 5500 INSTEAD OF 3700)

ST. JOHN'S (QUINLAN HELIFLIGHT SERVICES) - CDC2 - Cert

NOTAM

(H0055/23 NOTAMR H3562/22

Q) CZXX/QOEC/IV/NBO/E/000/999/5440N06941W999
 A) CZUL CZQM CZQX B) 2301111839 C) 2304121800EST
 E) ALL ACFT, REGARDLESS OF THE STATE OF REGISTRY, DIRECTLY OR INDIRECTLY OWNED, CHARTERED, LEASED, OPERATED OR OTHERWISE CONTROLLED BY A PERSON CONNECTED WITH EITHER THE RUSSIAN FEDERATION OR OF BELARUS OR BY A CORPORATION OR ENTITY THAT IS INCORPORATED OR FORMED UNDER THE LAWS OF THE RUSSIAN FEDERATION OR BELARUS, AND ALL OPERATORS HOLDING AN AIR OPERATOR CERTIFICATE (AOC) ISSUED BY RUSSIAN FEDERATION AND/OR BELARUSIAN AUTHORITIES ARE PROHIBITED TO ENTER, EXIT OR OVERFLY CANADA'S TERRITORIAL AIRSPACE (INCLUDING FLT WITHIN 12NM OF CANADA'S COASTS). EXCEPTIONS PERMITTED FOR ACFT EXPERIENCING INFLIGHT EMERG.

ALL AUTH OBTAINED PRIOR TO 27 FEB 2022 FOR ACFT AND OPS SUBJECT TO THIS NOTAM ARE REVOKED.

HUMANITARIAN, SAR, MEDEVAC AND ANY OTHER FLT SEEKING AN EXCEPTION TO THIS RESTRICTION MUST RECEIVE AUTH GRANTED AFTER 27 FEB 2022 FM THE MINISTER OF TRANSPORT TO OPERATE IN CANADA'S TERRITORIAL AIRSPACE. AFFECTED ACFT WISHING TO OBTAIN SUCH AN AUTH OR CLR INTO CANADA'S TERRITORIAL AIRSPACE MAY APPLY TO THE MINISTER OF TRANSPORT AT 1-877-992-6853 OR 1-613-992-6853 OR BY EMAIL AT OPERATIONS.AVIATION(AT)TC.GC.CA.

FR:

TOUS AERONEFS, INDEPENDAMMENT DE L'ETAT D'IMMATRICULATION, DIRECTEMENT OU INDIRECTEMENT POSSEDES, AFFRETES, LOUES, EXPLOITES OU CONTROLES PAR UNE PERSONNE LIEE AVEC LA FEDERATION Russe OU DU BELARUS OU PAR UNE SOCIETE OU UNE ENTITE INCORPOREE OU FORMEE EN VERTU DES LOIS DE LA FEDERATION Russe OU DU BELARUS, ET TOUS LES EXPLOITANTS DETENANT UN CERTIFICAT D'EXPLOITANT AERIEN (CEA) EMIS PAR LA FEDERATION Russe ET/OU LES AUTORITES DU BELARUS SONT INTERDITS D'ENTRER, DE SORTIR OU DE SURVOLER L'ESPACE AERIEN TERRITORIAL DU CANADA (Y COMPRIS LE VOL A MOINS DE 12 MILES NAUTIQUES DES COTES CANADIENNES). EXCEPTIONS PERMISES POUR LES AERONEFS SUBISSANT DES URGENCES EN VOL.

TOUTES LES AUTORISATIONS OBTENUES AVANT LE 27 FEB 2022 POUR LES AERONEFS ET LES OPERATIONS SOUMIS A CE NOTAM SONT REVOQUEES.

LES VOLS HUMANITAIRES, SAR, MEDEVAC ET TOUT AUTRE VOL RECHERCHANT UNE EXCEPTION A CETTE RESTRICTION DOIVENT RECEVOIR UNE AUTORISATION ACCORDEE APRES LE 27 FEB 2022 PAR LE MINISTRE DES TRANSPORTS POUR OPERER DANS L'ESPACE AERIEN TERRITORIAL DU CANADA. LES AERONEFS AFFECTES SOUHAITANT OBTENIR UNE TELLE AUTORISATION OU AUTORISATION D'ENTRER DANS L'ESPACE AERIEN TERRITORIAL CANADIEN PEUVENT FAIRE UNE DEMANDE AU MINISTRE DES TRANSPORTS AU 1-877-992-6853 OU 1-613-992-6853 OU PAR COURRIEL A OPERATIONS.AVIATION(AT)TC.GC.CA)

(E0314/23 NOTAMR E0263/23

Q) CZQX/QFAXX/IV/NBO/A/000/999/4737N05245W005
 A) CYYT B) 2301192322 C) 2302172100
 E) LOW VIS PROC LTD TO 1 ACFT ON THE MANOEUVRING AREA OR CLR TO LAND AT A TIME DUE TO SFC GUIDANCE U/S.)

(E5826/22 NOTAMN

Q) CZQX/QFFCH/IV/NBO/A/000/999/4737N05245W005
 A) CYYT B) 2211031516 C) PERM
 E) AMEND PUBLICATIONS: SERVICES:
 ACFT RESCUE AND FIRE FIGHTING (ARFF) TO READ: DESIGNATED CAT 7)

(E0859/23 NOTAMR E0797/23

Q) CZQX/QMXLC/IV/M/A/000/999/4737N05245W005
 A) CYYT B) 2302131309 C) 2305122330EST
 E) TWY M BTN TWY B AND TWY D CLSD.)

(E0401/23 NOTAMR E5698/22

Q) CZQX/QPICH/I/NBO/A/000/999/4737N05245W005
 A) CYYT B) 2301231619 C) 2304211900EST
 E) DUE TO NON-PRECISION LVL OF SVC RWY 16

RNAV (GNSS) X RWY 16 APCH:
 LPV CAT A MINIMA TO READ: 694 (251) 1 RVR 50

RNAV (GNSS) Z RWY 16 APCH:
 LPV MINIMA TO READ: 694 (251) 1 RVR 50

ILS RWY 16 APCH:
 ILS/DME MINIMA TO READ: 703 (250) 1 RVR 50)

(E5753/22 NOTAMN

Q) CZQX/QFIXX/IV/NBO/A/000/999/4737N05245W005
 A) CYYT B) 2210311411 C) PERM
 E) AMEND PUBLICATIONS:
 PRO: DE-ICING PROCEDURES: NOTES: ADD:
 CTC 709-753-9742 FOR DE-ICING IF ICEHOUSE UNAVBL)

(E0589/23 NOTAMR E5820/22

Q) CZQX/QFAXX/IV/NBO/A/000/999/4737N05245W005
 A) CYYT B) 2302020051 C) 2305011930EST

E) STOP BAR RWY 11, RWY 29, TWY C, TWY D, TWY G, TWY J AND TWY M U/S)

(N4660/22 NOTAMN

Q) CZQX/QAACH/IV/B0/E/000/999/4811N05340W100

A) CZQX B) 2212292000 C) 2303281900EST

E) V315 BTN YQX VOR AND YYT VOR MEA TO READ 5500 INSTEAD OF 3700)

CANADA WATER AERODROME SUPPLEMENT

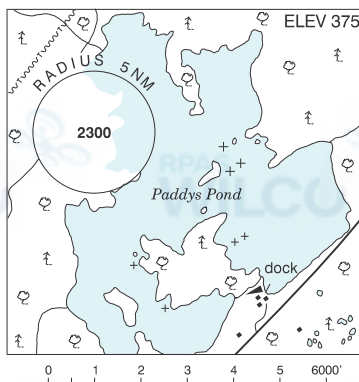
Effective 0901Z 24 March 2022 to 0901Z 20 April 2023

B196 AERODROME/FACILITY DIRECTORY

ST. JOHN'S (PADDYS POND) NL

CCQ5

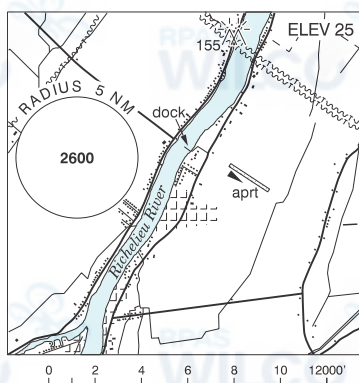
REF	N47 28 W52 54 5SW 19°W (2013) UTC-3½(2½) Elev 375' A5012
OPR	Avalon Float Plane Association 709-364-2855/690-9486 Reg
PF	C-1,2,3 D-4,5,6
FLT PLN	
FIC	London 866-WXBRIEF (Toll free within Canada) or 866-541-4104 (Toll free within Canada & USA)
ACC	(IFR only) Gander 709-651-5225 or 888-751-5225.
SERVICES	
FUEL	100LL PN 1day
S	5
A/D DATA	Open water May-Nov. Ramps & moorings.
COMM	
RCO	London rdo 123.275 (FISE) 126.7 (bcst)
ATF	tfc 123.2 5NM 3400 ASL excluding St. John's Intl CZ
NAV	
VOR/DME	TORBAY YYT 113.5 Ch 82 N47 29 07 W52 51 08 (839')
PRO	Bcst/monitor 123.2 when taxiing.
CAUTION	Strong easterly winds in main pond area. Many shoal areas.



ST-MATHIAS QC

CSV9

REF	N45 30 10 W73 15 08 1N 15°W (2014) UTC-5(4) Elev 25' VTA A5002
OPR	Avn B.L. Inc 450-658-2041 Fax 450-658-3982 Reg
PF	B-1 13-22Z± C-2,3,4,5,6 at adj land A/D
FLT PLN	
FIC	(bil) Québec 866-GOMÉTÉO or 866-WXBRIEF (Toll free within Canada) or 866-541-4105 (Toll free within Canada & USA)
SERVICES	
FUEL	100LL
OIL	W100, 15W50, 20W50, 25W60
S	1,2,3,4,5
A/D DATA	Open water mid Apr-Nov. Depth 4', mud bottom. Asphalt ramps.
COMM	
ATF	tfc 123.2 5NM below 2000 ASL outside CYHU CZ
PRO	Training Areas: See Montréal Terminal VTFC.
CAUTION	P-lines 155 AGL 0.75NM NE of dock.



NEWFOUNDLAND AND LABRADOR

AERODROME/FACILITY DIRECTORY

ST. JOHN'S (HEALTH SCIENCES CENTRE) NL (Heli)

CCK2

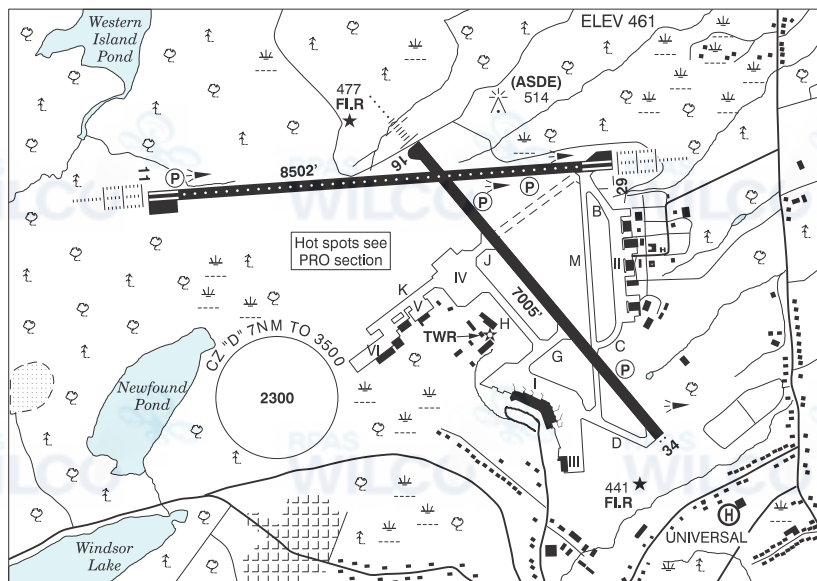
REF	N47 34 21 W52 44 44 1.5WNW 17°W (2022) UTC-31/2 (21/2) Elev 216' A5012	
OPR	Eastern Health Care 709-777-6294 Cert PPR	
PF	A-1 C- 5	
FLT PLN		
FIC	London 866-WXBRIEF (Toll free within Canada) or 866-541-4104 (Toll free within Canada & USA)	
HELI DATA	FATO/TLOF 123' x 123' ASPH Safety Area 164'x164' Max heli overall length 82'	
RCR	Opr	
LIGHTING	DR(064°) RW(LO) yellow RF(FL)	
COMM		
TWR	St. John's 120.6 (E)	
PRO	Arr/dep 064° & 186° fr heli (H1).	
CAUTION	Lgtd P-line aprx 262 ASL aprx 1540' E of heli safety area. P-Line oriented NW-SE Downslope, perpendicular to and within arr/dep path 065°.	

NEWFOUNDLAND AND LABRADOR

AERODROME / FACILITY DIRECTORY

ST. JOHN'S INTL NL

CYYT



REF	N47 37 07 W52 45 09 3NW 19°W (2012) UTC-31/2(21/2) Elev 461' A5012 L08 H16 CAP OC
OPR	St. John's International Airport Authority Inc 709-757-4444 H24 Cert
PF	A-1,2,3,6 C-4,5
CUST	AOE/165 (450 with staged off-loading) 1130-0330Z± General aviation 888-226-7277
FLT PLN	
FIG	London 866-WXBRIEF (Toll free within Canada) or 866-541-4104 (Toll free within Canada & USA)
ACC	(IFR only) Gander 709-651-5225 or 888-751-5225.
WX	METAR H24 TAF H24, issue times: 00, 06, 12, 18Z
SERVICES	
FUEL	100LL, JA-1 (FSII avbl) O/R
OIL	All
S	1,2,4
ARFF	DESIGNATED CAT 6
SUP FL	LPOX, D & A-ice
JASU	CAN-A Elect Start 10/15
MIL ADV	Transient svcs avbl to RCAF and NATO acft thru Air Reserve Torbay Ops 709-570-4791 or 709-685-0243. Trans svcg avbl 1030-0230Z±, aft hrs with 4 hr PN. Tow bars avbl for C130, P3, EH101, S61, C144
PVT ADV	Woodward Aviation 123.5 709-579-3776 Fax 709-579-8513; Shell Aerocentre 123.0 709-576-4615 Fax 709-576-0768; Irving Aviation Svcs 122.9 709-758-3200 Fax 709-758-3201
MIL CON	Woodward's Oil Ltd 709-579-3776

NEWFOUNDLAND AND LABRADOR

AERODROME/FACILITY DIRECTORY

ST. JOHN'S INTL NL (Cont'd)

CYYT

RWY DATA	Rwy 11(105°)/29(285°) 8502x200 asphalt Rwy 16(158°)/34(338°) 7005x200 asphalt Rwy 16 down 0.32% RESA: 16/34 492'; 11/29 492'
RWY CERT	Rwy 11 RVR 600/Rwy 29 RVR 600 AGN V Rwy 16 RVR 1200(1/4sm)/Rwy 34 RVR 1200(1/4sm) AGN V
TWY	Twy K uncontrolled bcst intentions on 121.9
APRON	All Aprons uncontrolled. Taxiing acft to remain on taxilanes. Acft shall not taxi btwn tml and pushed back acft. Acft with a wingspan of 52m (170.6ft) or more but less than 65m (213.3') shall access Apron I via Twy G only, rstd to Gate 1. Dedicated cargo ops proh. Apron II rstd to acft with wingspan 52m (170.6') or less. All turbine acft engine runs above idle power prohibited on Apron II. Apron II Helicopter FATO operations prohibited.
RCR	Opr CRFI Win field cond reports 709-757-4444. PLR/PCN
LIGHTING	11-AL(TE HI CL TDZL) P3, 29-AL(TE HI CL TDZL) P3, 16-AN(TE HI CL) P3, 34-AS(TE HI CL) P3
COMM	
RCO	London rdo 123.275 (FISE) 126.7 (bcst)
ATIS	128.0
GND	121.9 275.8
TWR	120.6 236.6 (E) (emerg only 709-724-1055)
PAL	Gander Ctr 133.15 135.35 227.3
MIL	Air Reserve Torbay Ops 131.02
INTL AIR	Gander rdo 122.375 135.35
NAV	
VOR/DME	TORBAY YYT 113.5 Ch 82 N47 29 07 W52 51 08 (839')
DME	ISO 110.3 Ch 40 N47 37 26 W52 44 27 (474')
ILS	IYT 110.7 (Rwy 16) RVR LOC reliable only within 10° either side of centreline; ISO 110.3 (Rwy 29) RVR LOC reliable only within 10° either side of centreline; IMP 109.1 (Rwy 11) RVR LOC reliable only within 10° either side of centreline

ST. JOHN'S INTL NL (Cont'd)

CYTT

PRO

Pilots should refer to Canadian Airport Charts (CAC) to obtain details on established hot spots, prior to operating on maneuvering areas. CAC are available for free on the NAV CANADA website.

DE-ICING OPERATIONS

DE-ICING BAYS

1. Bay 1 - Max wingspan for de-icing ops 35.8m (117')
2. Bay 2 - Max wingspan for de-icing ops 35.8m (117'). Note: Bay 3 is closed/unusable when Bay 2 is occupied.
3. Bay 3 - Max wingspan for de-icing ops 79.75 (262'). Note: Bays 2 and 4 are closed/unusable when Bay 3 is occupied.
4. Bay 4 - Max wingspan for de-icing ops is 35.8m (117'). Note: Bay 3 is closed/unusable when Bay 4 is occupied.

NOTE: The above noted max wingspans are intended to protect adj de-icing bays, safety zones and the apron twy. Exceedances of these values are permitted but must be evaluated and approved by the Aprt Authority to ensure special op procedures are communicated and implemented.

DE-ICING PROCEDURES

1. Ctc ICEMAN on 129.2 30 min prior to pushback.
2. Ctc ST JOHN'S GND after pushback for taxi to CDF.
3. Hold short of CDF on H.
4. ST JOHN'S GND will advs fit crew to ctc ICEMAN on 129.2 when acft has taxied to the proper entry point.
5. ICEMAN will then delegate all further manoeuvring instructions from the entry point to and on the CDF.
6. Flt crews are advs to exercise discretion at all times while on the CDF. Directional signage and taxi lines on the CDF must be followed by fit crews at all times.
7. Upon completion fit crews must advs ICEMAN that all equipment and de-icing personnel are away from the aircraft and have returned to their designated safety zones.
8. ICEMAN will instruct the acft to hold its position on the CDF and ctc ST JOHN'S GND on 121.9.
9. Acft to hold its position until ST JOHN'S GND issues further taxi instructions from the CDF.

NOTE:

1. Acft intending on returning to any apron after de-icing must drip dry for 25min on CDF.
2. Single engine taxi not permitted from CDF.
3. Engine run-ups are not permitted on CDF.

CAUTION

Open pit blasting ops 11NM SW to 1000 ASL 200 AGL, 1NM radius of N47 29 08 W52 57 11.

Weather condition: No landing auth without electronic GP or vertical guidance capability when moderate to severe turbulence/wind shear/downdrafts being reported.

Daily radiosonde balloon launches with an ascent rate of 1000 ft/min btwn hrs of 1115-1345Z and 2315-0145Z.

Extv bird activity May-Nov.

NEWFOUNDLAND AND LABRADOR

AERODROME / FACILITY DIRECTORY

ST. JOHN'S (QUINLAN HELIFLIGHT SERVICES) NL (Heli)

CDC2

REF	N47 36 30 W52 43 38 19°W (2014) UTC-31/2(21/2) Elev 412' A5012	
OPR	Quinlan Heliflight Services 709-682-4472 Cert PPR	
PF	B-1 C-2,3,4,5,6	
FLT PLN		
FIC	London 866-WXBRIEF (Toll free within Canada) or 866-541-4104 (Toll free within Canada & USA)	
ACC	(IFR only) Gander 709-651-5225 or 888-751-5225.	
SERVICES		
S	2	
HELI DATA	FATO/TLOF 64' x 64' ASPH Safety Area 85' x 85' Max heli overall length 42.7'	
RCR	Opr Ltd win maint	
COMM		
TWR	St. John's 120.6 (E)	
PRO	Arr/dep 230° to 241° fr heli, slope 8% (H3) day only.	